



## TfW Membership

TfW has two membership levels, full and associate.

### Full Members

Are employers who are developing and implementing initiatives that encourage healthy and more sustainable travel to and for work.

Full members have access to all the TfW Services (see over).

Full membership will initially be valid for the 12 month period in which the initiatives take effect. It is renewed if other initiatives are planned in subsequent years.

### Workplace Travel Plan

To gain full TfW membership for the longer-term we encourage you to produce and implement a workplace travel plan with our help.

### Senior Management Support

To ensure you are designated as a full TfW member we ask that a senior manager write to us requesting membership and committing your

organisation to producing and implementing a travel plan or at least one travel initiative in the first 12 months.

### Travel Plan Awards

We encourage TfW members who are producing travel plans to apply for a Travel Plan Award. This will provide structure and invaluable assistance, reward and positive publicity for your travel planning activities (see Awards info sheet).

### Associate Members

Some employers may not yet be in a position to develop and implement initiatives. They are, however, interested in travel planning.

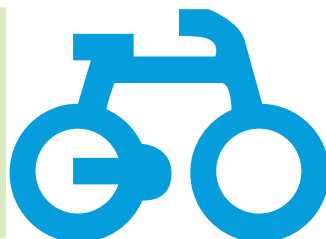
These employers are TfW Associate Members and have access to a more appropriate, smaller number of the TfW services (see overleaf).



Travel for Work Services	Full Members	Associate Members
Advice on travel initiatives and travel planning	✓	✓
Adult cycle training	✓	✓
CamShare (carshare database)	✓	✓
Diagnostic Visits	✓	✗
Email Group	✓	✓
Cycle stand grants (Take A Stand)	✓	✗
Cycle shop discounts	✓	✗
Free Annual Travel Survey	✓	✗
Benchmarking Travel Survey £150	✓	✓
Information, advice and support on public transport, cycling and walking options	✓	✓
Model work-life balance policies	✓	✓
Networking events	✓	✓
Professional Support	✓	✓
Staff home postcode mapping service £150	✓	✓
TfW Newsletter	✓	✓
Travel Plan Awards Scheme	✓	✗
Travel Plan Template and guidance notes	✓	✓
Website	✓	✓
Writing first draft of travel plan (smaller organisations only)	✓	✗

**For further information contact:**

Mark Webb  
 TfW Development Manager  
 Tel: (01223) 715550  
 Email: [info@tfw.org.uk](mailto:info@tfw.org.uk)



[updated Feb 09]