



[TfW website](#)

[About TfW](#)

[Diary & Events](#)

[Links](#)

[Contact TfW](#)

Please spread the word and forward this PDF to your friends

New TfW full members
since September 2009:

- Citizens Advice Bureau
- Kall Kwik
- NHS East of England

Hello All,

I hope you're enjoying this crisp Autumnal weather. I m' just about managing to stay in my shorts on my bike – but the long trousers are about to make an entrance!

After our survey, more later, the next big event for Travel for Work will be the **Annual Travel Plan Awards**. The ceremony will take place next January (week commencing 19th Jan) at the SmartLIFE Centre in Cambridge.

We are aiming to issue a special newsletter in the near future with some exciting news on our presenter for the award ceremony and a confirmed date – so watch this space – and get your travel plan up to date (contact us for help) ... you'll not want to miss out!

We are in the throes of recruiting for a **new travel plan adviser** at TfW – there is still time to get an application in (closing date is Friday 16th October). See <http://www.jobsincambs.com> and quote ref: CT 157.

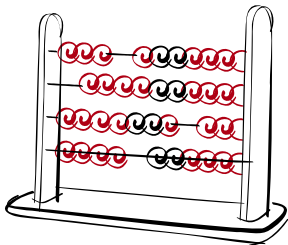
If you know anyone who would like a really rewarding job in a great team please do let them know.

Mark Webb

TfW Development Manager 01223 715696

Featured News

2009 Annual Travel to Work Survey

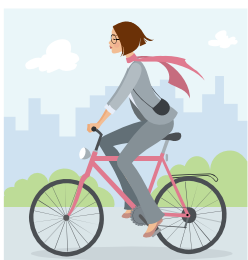


The survey is well underway. As I write on Monday we have already had over 6,000 respondents! As we had 8,000 for the whole survey last year it looks like we're going to smash that record.

With over 70 reports to write following the data analysis in November we are going to be very busy at TfW! Please bear with us!!

Just a reminder that we can do one-off surveys at any time of year for the very good price of £150 – and you get the opportunity to as one or two bespoke questions.

Women & Cycling – useful article from Evening News



You may have seen the double page spread featuring three women (including Dr Mary Archer) who regularly to work in the Evening News a week or so a go. TfW was instrumental in getting this feature developed. Click here for a link to the online version: http://www.cambridge-news.co.uk/cn_news_home/displayarticle.asp?id=453919

Do use this **in publicity to help promote cycling commuting to women** who are thinking of taking the plunge. These three women are very inspiring!! (and don't forget Adult Cycle Training is now only £5 per hour (see below)

Travel Plans Plus (TP+) Project – Underway!



The **TRAVEL PLAN PLUS PROJECT** is now up and running in the Cambridge Science and Business Park area of Cambridge – and includes CRC, Taylor Vinters Solicitors and St John's Innovation Centre.

Gary has run an inaugural employer event in September. And then in early October we held our first steering group meeting. This meeting came up with several actions and Gary is now:

- Organising a Commuter Choices Roadshow
- An employer Travel Plan Safari
- (Guided) Busway – and Cycle way – roadshows

We are very pleased with the levels of enthusiasm and support this project has received so far from employers and other stakeholders. If you'd like to know more about TP+ please go to <http://www.tfw.org.uk/tpplus.php> .

Annual Report 2008-09 Published



The **TfW Annual Report** is now available for download on our website <http://www.tfw.org.uk/news.php#AnnualReport>

This lets you know what we did last financial year, and how much it cost – like most annual reports! But a good read nonetheless.

CamShare September Prize Draw Winners



Our congratulations to CamSharers Kelsey Tobolik at Cambridgeshire Constabulary and an employee of Addenbrooke's Hospital, both winners of our **September CamShare prize draw**.

Kelsey, who commutes from Peterborough to the Constabulary HQ in Huntingdon, and the Addenbrooke's commuter both searched and contacted their best match for a car sharer. Kelsey receives an organic vegetable box with 3 deliveries and the other lucky winner receives essential car safety equipment in a branded Travel for Work holdall.

A record **250 new members** registered with CamShare in September, doubling the best previous month's activity, making a **total of 1,898 members** with registered journeys.

As it's even more likely members will find a good car share match, do promote to your staff using our editable posters, see <http://www.tfw.org.uk/news.php#camshareprize>.

And look out for the next CamShare Prize Draw ... watch this space!

CamShare Banner to borrow for FREE



Whilst talking of CamShare promotions we are now able to let you borrow our effective pop-up CamShare banner to use in promotion events or just to have for a week or so in your foyer.

Contact Lindsey Rushmore on 01223 715694 or email Lindsey.rushmore@cambridgeshire.gov.uk to make arrangements.

More GIANT Bike Shop Discounts!



TfW is very pleased to welcome new **The Giant Store Cambridge**, 144 Hills Road, Cambridge, to the TfW Bike Shops Discount scheme.

At www.giant-cambridge.co.uk Giant's new concept store in Cambridge, you will receive information on the full range of Giant models for all your cycling needs, including accessories and repair service for all makes of bike.

Do promote cycle shops discounts to staff who may be buying lights or cycling accessories for winter warmth see <http://www.tfw.org.uk/tp-cycling.php#cycleshopdiscounts>

Take A Stand County Wide – deadline 30 November 2009



Time is running out for employers based **outside the City of Cambridge** to share in funding pot for new, improved or replacement cycle stands/covers/security.

Please contact Lindsey on 01223 715694 and download the application form from <http://www.tfw.org.uk/services.php#ServicesTakeAStand> to improve facilities for your commuter cyclists.

Take A Stand Take 2! Cycle Cambridge News –



With the clocks going back on 25 October and the nights starting to get longer, the Cycle Cambridge team would like to encourage everyone to keep cycling this autumn.

Under the Cycle Cambridge/TfW Take A Stand scheme, employers in Cambridge or its satellite villages can receive **substantial funding towards cycle parking** for their staff and in some cases **free cycle stands for visitors**.

For more information please call Lindsey on 01223 715694 and see TfW website at <http://www.tfw.org.uk/news.php#takeastand09>

Subsidised Adult Cycle Training - £% per hour



If you have never cycled before or it's years since you were in the saddle, here's an ideal opportunity to get back on track.

An Adult Cycle Training session will give you confidence and improve your cycle skills. You can do it by yourself or in pairs. Each session is individually tailored to your needs. You could learn how to position yourself in traffic, discover the best ways to get to work or to go on leisure rides. It's up to you!

Training sessions cost **only £5 per hour** and are available to people living, working or studying in Cambridgeshire. How about organising a group session – perhaps you could subsidise the event for your staff?

To find out more or book a lesson, contact the Road Safety Team direct on 0345 045 5212, email simon.haydn@cambridgeshire.gov.uk or fill in the form on-line: <http://www.cambridgeshire.gov.uk/transport/safety/education/adult+cycle+training.htm>

STOP PRESS: NOW you can book Adult Cycle Training ONLINE



Booking Cycle Training sessions just got much easier! Just as we went to press we learnt that Cycle Cambridge has now set up an online booking service for Adult Cycle Training.

Do please let your staff know and add this useful link to your travel pages.

<http://www.cambridgeshire.gov.uk/transport/safety/education/adult+cycle+training.htm>

Other News – Cambridgeshire

Transport Innovation Fund



Cambridgeshire County Council's Cabinet has considered its response to the findings of the Cambridgeshire Transport Commission report.

A paper went to the County Cabinet on 29 September and is due to go to full Council on 13 October. If Council agrees a submission will be put forward to Government in October.

To find out more about Cambridgeshire County Council's plans to tackle congestion see www.cambridgeshire.gov.uk/transport/strategies/tacklingcongestion

Travel for Work Partnership
Box CC 1312, Castle Court
Cambridge CB3 0AP
TEL: 01223 715 550

